



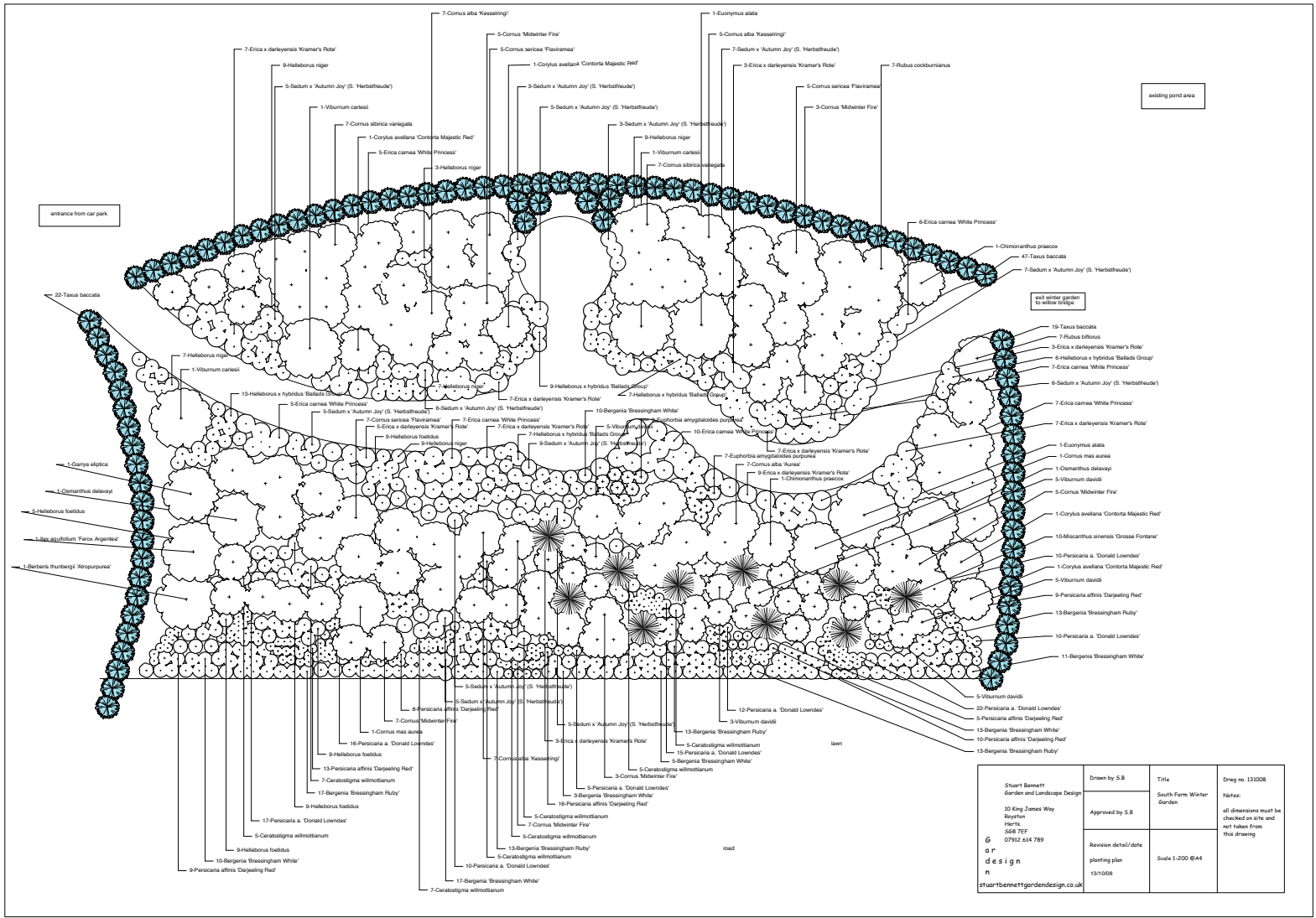
# WINTER GARDEN

The winter garden is designed to provide as much colour through the winter as other parts of the garden show through the spring and summer. The design allows access to otherwise secluded parts of the garden, linking to large newly planted borders around the front pond with the use of sweeping grass pathways.

Planting in the garden brings together coloured stems, bright foliage and fragrant winter flowers providing variations in texture and form. A *Taxus baccata* (yew) hedge planted around the winter garden is used to link with existing yew hedging in other parts of the garden. The yew hedge also provides an excellent dark green background to show off the pure white trunks of *Betula jacquemontii*, prickly chalky white shoots of *Rubus biflorus* and *cockburnianus* as well as groups of contrasting *Cornus* var. with stems of bright orange, red, yellow and dark purple.

On entering the garden you are met with the sweet scent of *Viburnum carlesii* and *Osmanthus delavayi* while *Chimonanthus praecox* provides sulphur yellow, fragrant flowers as you leave. White and pink *Erica carnea* (winter heather) give excellent value through the winter as ground cover while *Persicaria affinis* var. and *Bergenia cordifolia* the same job through the spring. Large shrubs such as *Garrya*, *Ilex* and *Berberis* are underplanted with a carpet of variegated *Hedera*. *Miscanthus sinensis* 'Grosse Fontaine' provide interest through the summer carrying their flowers deep into the winter months.

The garden is at its best from November to April and starts with the emergence of *Colchicum autumnale* (autumn crocus) the fiery red foliage of *Ceratostigma willmottianum* and the flowers of *Sedum* 'Autumn Joy' while the emergence of the first spring bulbs signals that the focus will soon turn to other parts of the garden.



Stuart Bennett Garden and Landscape Design 10 King James Way Raynton Here's S68 7EF G 07952 614 789 or d e s i g n n stuart@bennettgardendesign.co.uk	Drawn by S.B.	Title South Farm Winter Garden	Drawn no. 131008 Notes: all dimensions must be checked on site and not taken from this drawing
	Approved by S.B.		
	Revision detail/date 13/1008	Scale 1:200 @A4	